



Facilities Engineering
and Design Services for
**Health Care
Applications**

HOSPITALS | INPATIENT & OUTPATIENT SERVICES | AMBULATORY SUITES
DENTAL PRACTICES | RESEARCH & DEVELOPMENT CENTERS | LIFE SCIENCES

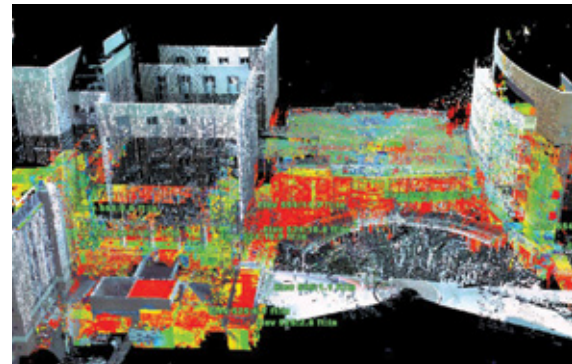
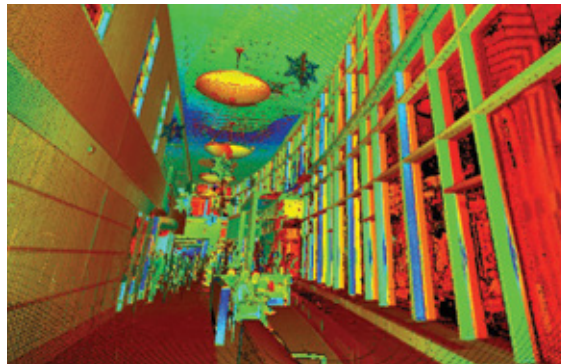


Building and renovating medical facilities require commitment to codes and budgets, as well as to patient-centered health care. Erdman Anthony has over 60 years of design experience. Our engineers understand the multidisciplinary demands and coordination required to navigate complex building processes and how to bring powerful designs to life.



Tool Proficiency

Erdman Anthony uses the latest industry tools in laser scanning, building information modeling (BIM), integrated energy modeling and life-cycle analysis to anticipate energy usage and operating costs.



University of Rochester Medicine's
Golisano Children's Hospital, Rochester, NY



Kaleida Health's Millard Fillmore Suburban Hospital, Williamsville, NY

Facilities Engineering and Design Services

New Buildings, Extensive Renovations

Whether it's an inpatient, outpatient, long-term, acute-care, or research facility, Erdman Anthony's technical capabilities provide working knowledge of each environment and its unique requirements. We can design, analyze, and simulate new or existing buildings with the latest industry tools to save our clients both time and money.

Count on us for design and implementation of these systems and controls that promote safety, health, comfort and efficiency:

- Heating, Ventilation, and Air-Conditioning
- Process Piping and Plumbing Systems
- Fire Protection and Life Safety
- Chemical Process Design
- Refrigeration Engineering
- Electrical Power and Distribution
- Telecommunications
- Building Control Systems
- Industrial Control Systems
- Energy Consulting
- Commissioning
- Existing Building Commissioning



Sechler Family Cancer Center, Lebanon, PA



Private dental office, Scotia, NY

95% Our repeat business record is a testament to our award-winning expertise and technology. Count on us to work closely with you throughout the process, maintaining clear and frequent communication. It's essential for keeping your project on time, on budget, and synchronized with your goals.



Saratoga Regional Urology Associates, Saratoga Springs, NY



Private dental office, Scotia, NY



Saratoga Regional Urology Associates, Saratoga Springs, NY



Health care facilities turn to Erdman Anthony's SustainabiliTEAM™ for one reason: We focus on the factors that can lead to significant energy savings in new and existing buildings.

Erdman Anthony has a long-standing commitment to sustainable and energy-efficient design. Our SustainabiliTEAM brings together engineering designers, energy consultants, and commissioning professionals for a comprehensive approach to sustainable design and operation of buildings.

From new facility design to improving operations through commissioning, from energy studies to audits, our SustainabiliTEAM uses a custom approach to achieve optimal solutions in quality and sustainability. Save energy and money with Erdman Anthony's SustainabiliTEAM.



Private dental office, Scotia, NY

When health, safety, and efficiency are critical, trust Erdman Anthony.

Since 1954, we've been dedicated to developing superior infrastructure solutions by partnering with our clients and studying their unique situations and listening carefully to their needs.

- Named a "Top 500 Design Firm" by Engineering News-Record for 30 consecutive years
- ISO 9001 quality certification since 2000

Accreditations



For more about our experience in health care commissioning and design, visit:

www.erdmananthony.com/healthcare



Corporate Headquarters:

145 Culver Road, Suite 200 • Rochester, NY 14620
(585) 427-8888

NY: ALBANY | BUFFALO | ROCHESTER
PA: HARRISBURG | PITTSBURGH
FL: WEST PALM BEACH ME: PORTLAND